

Plan B2

1 BEDROOM, 1 BATH

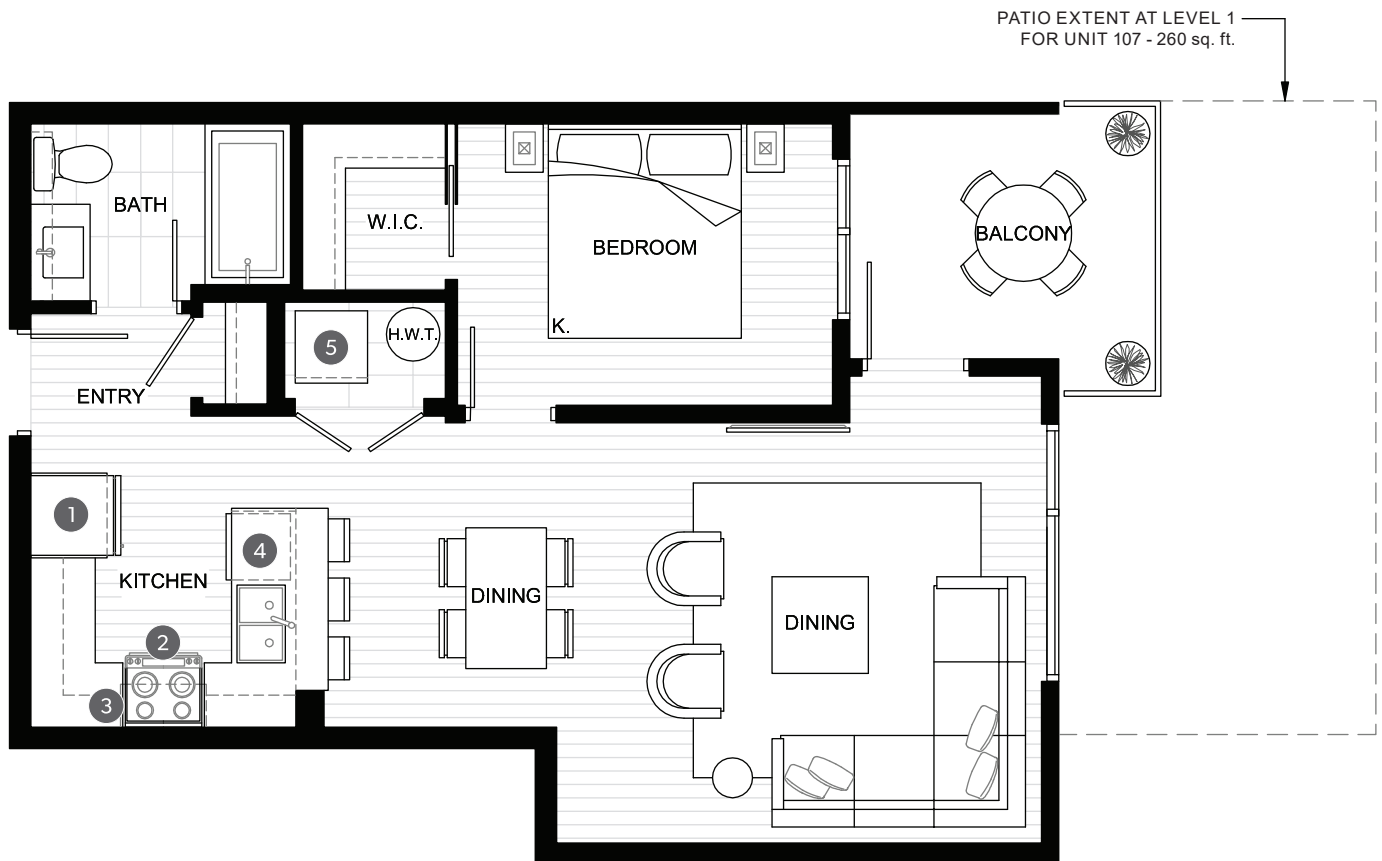


PORT MOODY

TOTAL AREA **720-900 SQ FT**

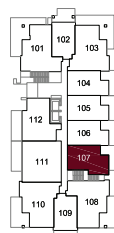
INDOOR AREA
640 SQ FT

OUTDOOR AREA
80-260 SQ FT



FEATURE LIST

1. 30" Fridge
2. 30" Electric Range
3. 30" Hoodfan
4. Dishwasher
5. High-Efficiency Full Size Washer and Dryer



1ST FLOOR

NORTH ↑

The developer reserves the right to make minor modifications to suite and furniture layout, specifications and floor plans should they be necessary to maintain the high standards of this community. Square footage are based on preliminary measurements and are approximate. E & O.E.

onni
group

Plan B

1 BEDROOM, 1 BATH



PORT MOODY

TOTAL AREA **680-840** SQ FT

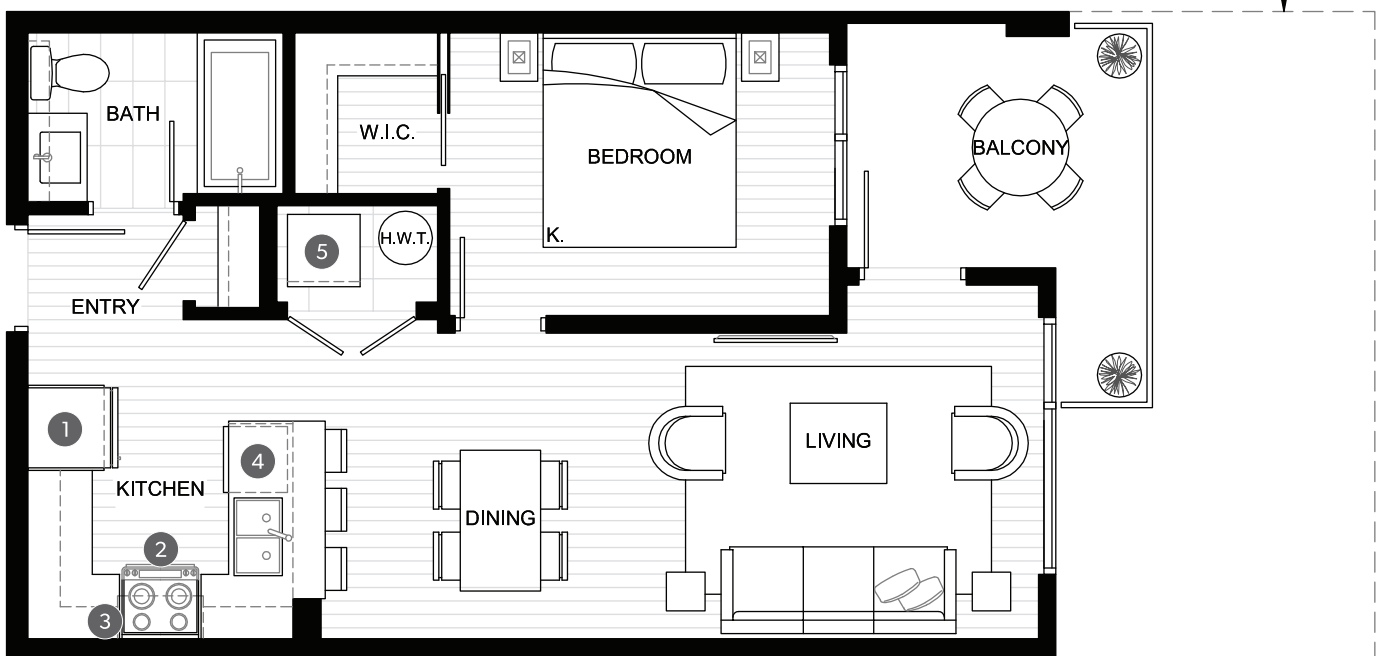
INDOOR AREA

590 SQ FT

OUTDOOR AREA

90-250 SQ FT

PATIO EXTENT AT LEVEL 1
FOR UNIT 104 - 240 sq. ft.
FOR UNIT 105 - 250 sq. ft.



FEATURE LIST

1. 30" Fridge
2. 30" Electric Range
3. 30" Hoodfan
4. Dishwasher
5. High-Efficiency Full Size Washer and Dryer



NORTH ↑

The developer reserves the right to make minor modifications to suite and furniture layout, specifications and floor plans should they be necessary to maintain the high standards of this community. Square footage are based on preliminary measurements and are approximate. E & O.E.

onni
group

Plan C

1 BEDROOM, DEN, 1 BATH



PORT MOODY

TOTAL AREA **670-830 SQ FT**

INDOOR AREA
580 SQ FT

OUTDOOR AREA
90-250 SQ FT

PATIO EXTENT AT LEVEL 1
FOR UNIT 106 - 250 sq. ft.



FEATURE LIST

1. 30" Fridge
2. 30" Electric Range
3. 30" Hoodfan
4. Dishwasher
5. High-Efficiency Full Size Washer and Dryer



NORTH ↑

The developer reserves the right to make minor modifications to suite and furniture layout, specifications and floor plans should they be necessary to maintain the high standards of this community. Square footage are based on preliminary measurements and are approximate. E & O.E.

onni
group

Plan E1

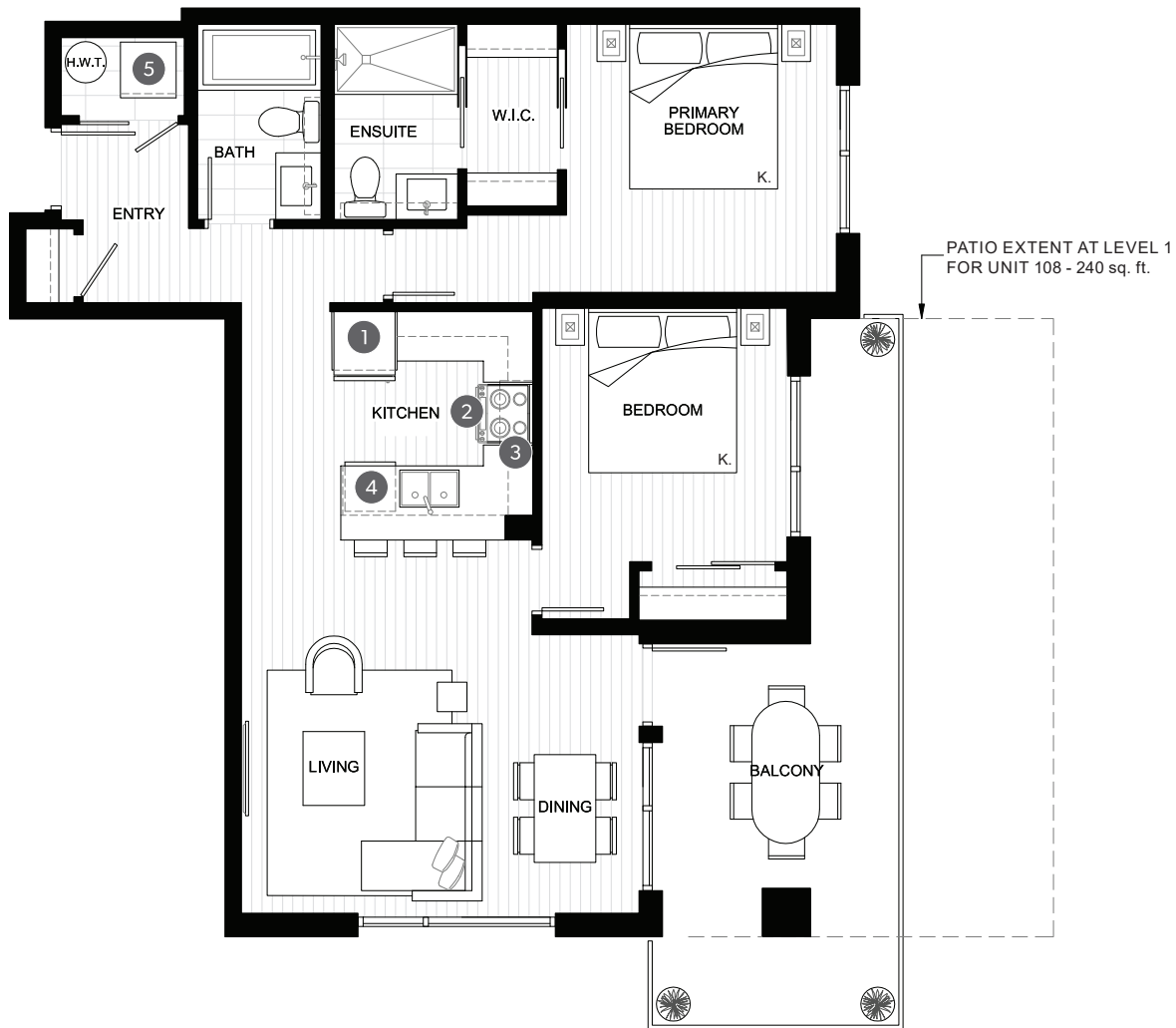
2 BEDROOM, 2 BATH

eve
PORT MOODY

TOTAL AREA **1,100-1,230 SQ FT**

INDOOR AREA
900 SQ FT

OUTDOOR AREA
220-330 SQ FT



FEATURE LIST

1. 30" Fridge
2. 30" Electric Range
3. 30" Hoodfan
4. Dishwasher
5. High-Efficiency Full Size Washer and Dryer



NORTH ↑

The developer reserves the right to make minor modifications to suite and furniture layout, specifications and floor plans should they be necessary to maintain the high standards of this community. Square footage are based on preliminary measurements and are approximate. E & O.E.

onni[®]
group

Plan E2

2 BEDROOM, 2 BATH



PORT MOODY

TOTAL AREA **1,030 SQ FT**

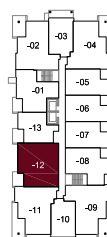
INDOOR AREA
940 SQ FT

OUTDOOR AREA
90 SQ FT



FEATURE LIST

1. 30" Fridge
2. 30" Electric Range
3. 30" Hoodfan
4. Dishwasher
5. High-Efficiency Full Size Washer and Dryer



3RD - 6TH FLOOR

NORTH ↑

The developer reserves the right to make minor modifications to suite and furniture layout, specifications and floor plans should they be necessary to maintain the high standards of this community. Square footage are based on preliminary measurements and are approximate. E & O.E.

onni
group

Plan E

2 BEDROOM, 2 BATH



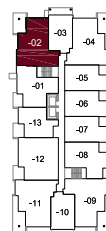
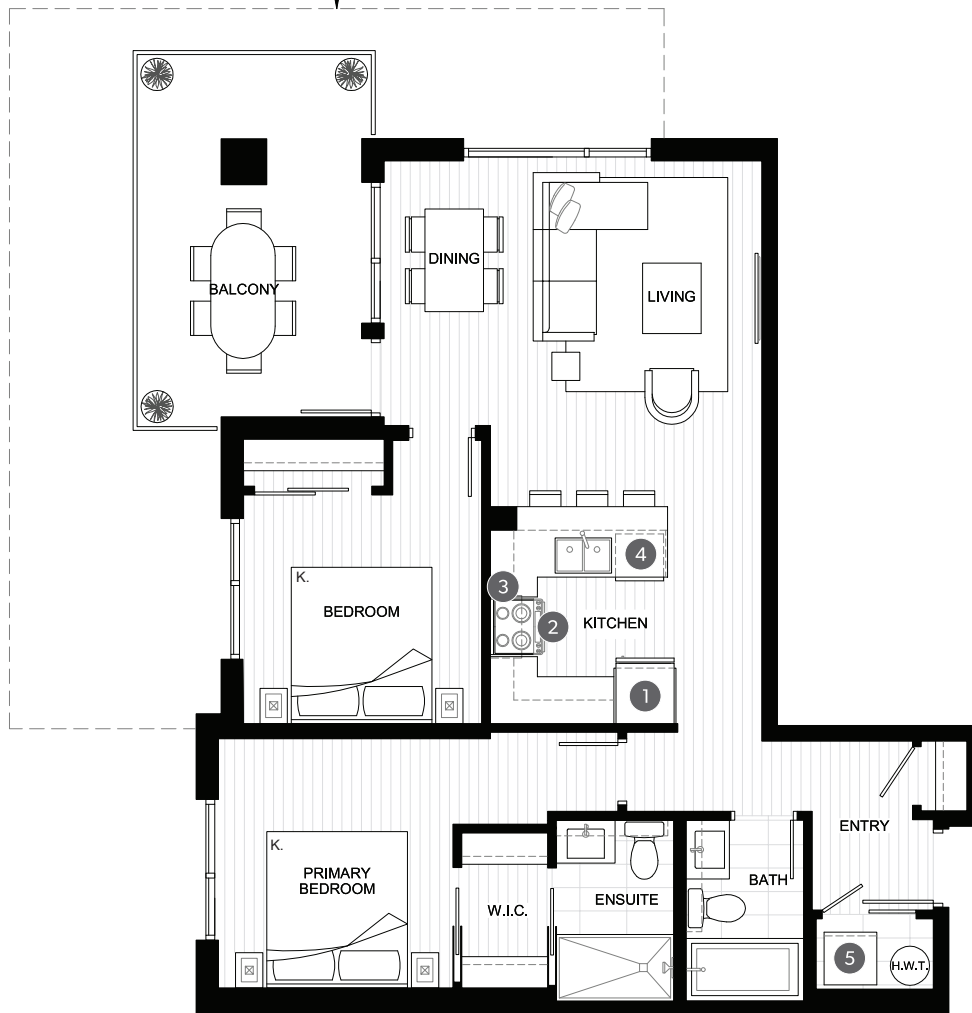
PORT MOODY

TOTAL AREA **1,030-1,390 SQ FT**

INDOOR AREA
870 SQ FT

OUTDOOR AREA
160-520 SQ FT

PATIO EXTENT AT LEVEL 1
FOR UNIT 101 - 520 sq. ft.



4TH - 6TH FLOOR

FEATURE LIST

1. 30" Fridge
2. 30" Electric Range
3. 30" Hoodfan
4. Dishwasher
5. High-Efficiency Full Size Washer and Dryer

The developer reserves the right to make minor modifications to suite and furniture layout, specifications and floor plans should they be necessary to maintain the high standards of this community. Square footage are based on preliminary measurements and are approximate. E & O.E.

NORTH ↑

onni
group

Plan F1

3 BEDROOM, 2 BATH



PORT MOODY

TOTAL AREA **1,190 SQ FT**

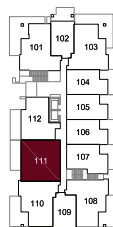
INDOOR AREA
990 SQ FT

OUTDOOR AREA
200 SQ FT



FEATURE LIST

1. 30" Fridge
2. 30" Electric Range
3. 30" Hoodfan
4. Dishwasher
5. High-Efficiency Full Size Washer and Dryer



1ST FLOOR

NORTH ↑

The developer reserves the right to make minor modifications to suite and furniture layout, specifications and floor plans should they be necessary to maintain the high standards of this community. Square footage are based on preliminary measurements and are approximate. E & O.E.

onni
group

Plan F2

3 BEDROOM, 2 BATH



PORT MOODY

TOTAL AREA **1,030 SQ FT**

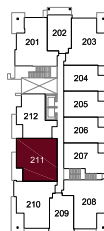
INDOOR AREA
940 SQ FT

OUTDOOR AREA
90 SQ FT



FEATURE LIST

1. 30" Fridge
2. 30" Electric Range
3. 30" Hoodfan
4. Dishwasher
5. High-Efficiency Full Size Washer and Dryer



2ND FLOOR

NORTH ↑

The developer reserves the right to make minor modifications to suite and furniture layout, specifications and floor plans should they be necessary to maintain the high standards of this community. Square footage are based on preliminary measurements and are approximate. E & O.E.

onni
group

Plan F

3 BEDROOM, 2 BATH

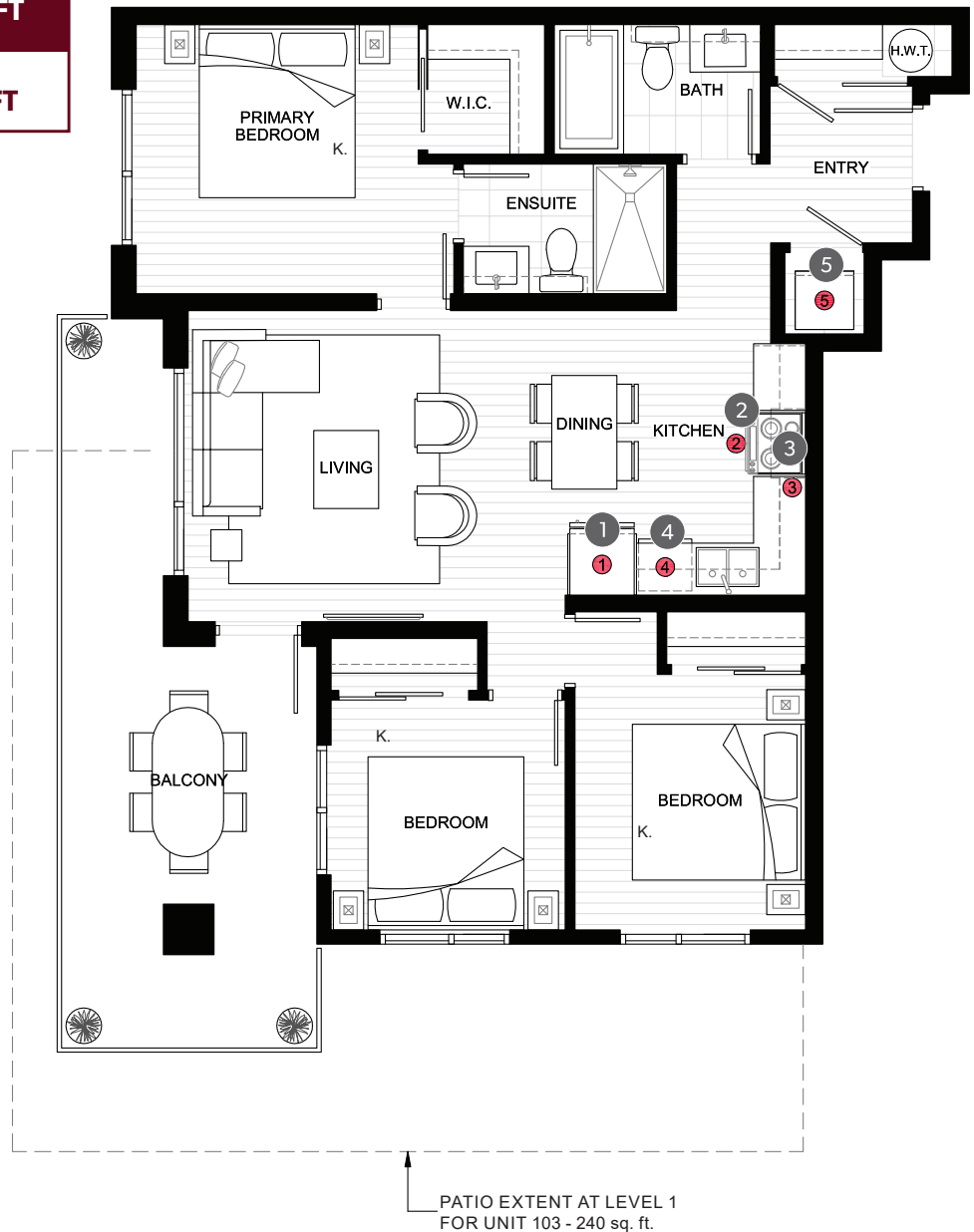


PORT MOODY

TOTAL AREA **1,110 - 1,190 sq ft**

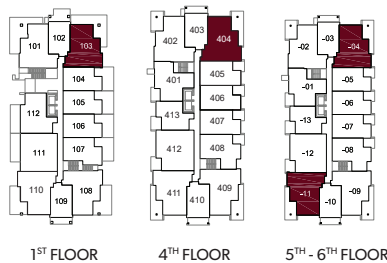
INDOOR AREA
900 SQ FT

OUTDOOR AREA
210 - 290 SQ FT



FEATURE LIST

1. 30" Fridge
2. 30" Electric Range
3. 30" Hoodfan
4. Dishwasher
5. High-Efficiency Full Size Washer and Dryer



NORTH ↑

The developer reserves the right to make minor modifications to suite and furniture layout, specifications and floor plans should they be necessary to maintain the high standards of this community. Square footage are based on preliminary measurements and are approximate. E & O.E.

onni
group