

# Plan F1

3 BEDROOM, 2 BATH



PORT MOODY

TOTAL AREA **1,190 SQ FT**

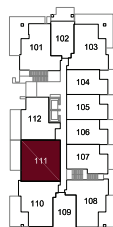
INDOOR AREA  
**990 SQ FT**

OUTDOOR AREA  
**200 SQ FT**



## FEATURE LIST

1. 30" Fridge
2. 30" Electric Range
3. 30" Hoodfan
4. Dishwasher
5. High-Efficiency Full Size Washer and Dryer



1<sup>ST</sup> FLOOR

NORTH ↑

The developer reserves the right to make minor modifications to suite and furniture layout, specifications and floor plans should they be necessary to maintain the high standards of this community. Square footage are based on preliminary measurements and are approximate. E & O.E.

**onni**  
group

# Plan F2

3 BEDROOM, 2 BATH



PORT MOODY

TOTAL AREA **1,030 SQ FT**

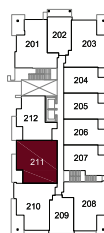
INDOOR AREA  
**940 SQ FT**

OUTDOOR AREA  
**90 SQ FT**



## FEATURE LIST

1. 30" Fridge
2. 30" Electric Range
3. 30" Hoodfan
4. Dishwasher
5. High-Efficiency Full Size Washer and Dryer



2<sup>ND</sup> FLOOR

NORTH ↑

The developer reserves the right to make minor modifications to suite and furniture layout, specifications and floor plans should they be necessary to maintain the high standards of this community. Square footage are based on preliminary measurements and are approximate. E & O.E.

**onni**  
group

# Plan F

3 BEDROOM, 2 BATH

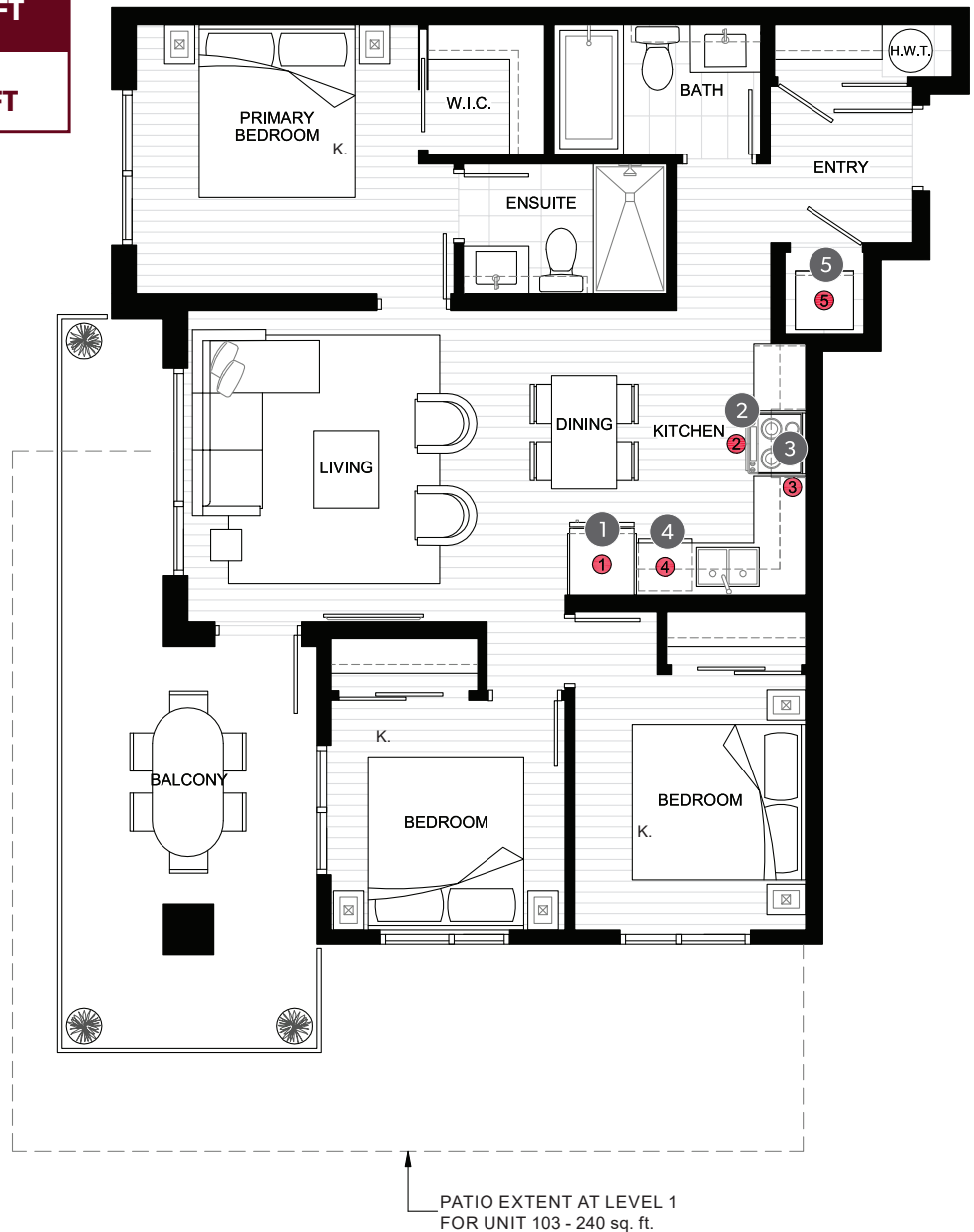


PORT MOODY

TOTAL AREA **1,110 - 1,190 sq ft**

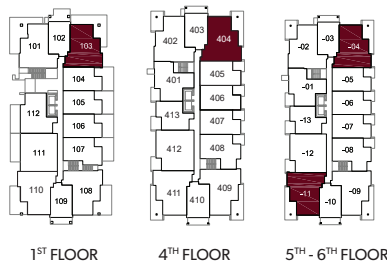
INDOOR AREA  
**900 SQ FT**

OUTDOOR AREA  
**210 - 290 SQ FT**



## FEATURE LIST

1. 30" Fridge
2. 30" Electric Range
3. 30" Hoodfan
4. Dishwasher
5. High-Efficiency Full Size Washer and Dryer



NORTH ↑

The developer reserves the right to make minor modifications to suite and furniture layout, specifications and floor plans should they be necessary to maintain the high standards of this community. Square footage are based on preliminary measurements and are approximate. E & O.E.

**onni**  
group